

**HANDLEM**  
 ALL RIGHTS RESERVED  
 BY THE AUTHOR

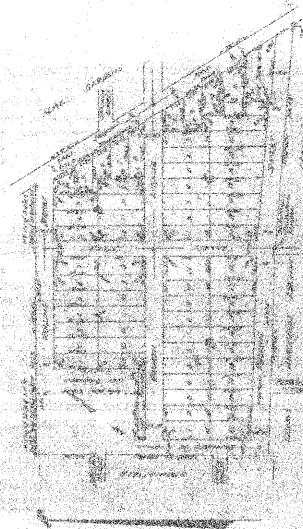
2-18

STATE OF CALIFORNIA  
 COUNTY OF LOS ANGELES

BEFORE ME, the undersigned authority, on this \_\_\_\_\_ day of \_\_\_\_\_, 2000, personally appeared \_\_\_\_\_, known to me to be the person whose name is subscribed to the foregoing instrument, and acknowledged to me that he executed the same for the purposes and consideration therein expressed.

Given under my hand and seal of office this \_\_\_\_\_ day of \_\_\_\_\_, 2000.

Notary Public in and for the State of California



APPROVED BY THE CITY ENGINEER  
 \_\_\_\_\_  
 CITY ENGINEER

APPROVED BY THE CITY ENGINEER  
 \_\_\_\_\_  
 CITY ENGINEER

APPROVED BY THE CITY ENGINEER  
 \_\_\_\_\_  
 CITY ENGINEER

APPROVED BY THE CITY ENGINEER  
 \_\_\_\_\_  
 CITY ENGINEER

APPROVED BY THE CITY ENGINEER  
 \_\_\_\_\_  
 CITY ENGINEER

APPROVED BY THE CITY ENGINEER  
 \_\_\_\_\_  
 CITY ENGINEER

APPROVED BY THE CITY ENGINEER  
 \_\_\_\_\_  
 CITY ENGINEER